



TARTU ÜLIKOOL
Narva kolledž

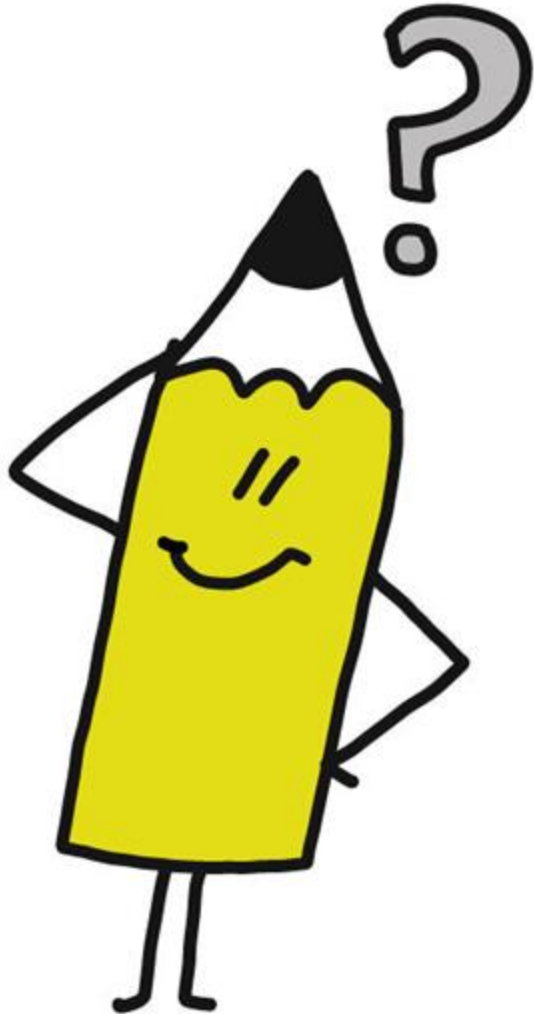


Diversity and variety in CLIL School systems across Europe

Anna Golubeva

Nina Raud





Presentation outline

- Seasoning and reasoning: quality assurance as OSCE outcome and instrument
- CLIL mapping – what, why and how?
- CLIL mapping survey as a means of quality self-assessment for educational institutions
- the case of Estonian OSCE schools
- Future road mapping



WHY CLIL MAPPING?

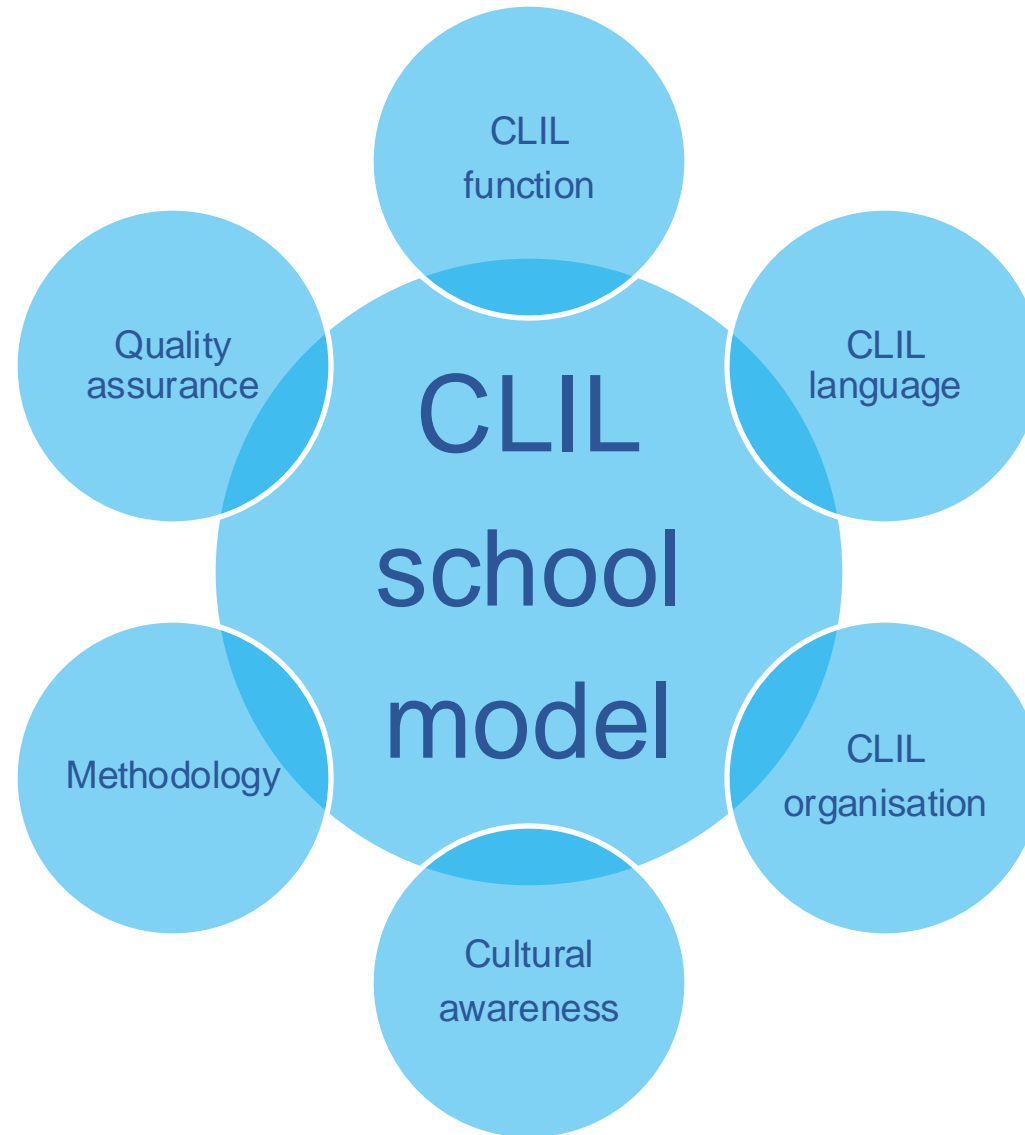
- How universal is CLIL across Europe and globally?
- Does CLIL shape educational policy or vice versa?
- OSCE position paper as guidelines for quality CLIL, CLIL mapping as a tool for (pre)school's reflection





CLIL MAPPING IN OSCE PROJECT

1. CLIL function
2. Role and status of language
3. CLIL organisation
4. Cultural awareness
5. Methodology
6. Quality assurance



CLIL function

What function does CLIL implementation serve in the context of your general education system?



CLIL is an enrichment tool for linguistic diversity for teaching content through a foreign/second language.



CLIL is a language substitution tool for teaching content through the state language (L1 substitution with L2).

CLIL language

What is the status of the CLIL language?



State



Heritage



Second



Foreign

CLIL organisation

Which forms of CLIL delivery do you offer within your school?



CLIL in individual lessons



CLIL as a strand



The whole school approach

Cultural awareness

Which is/are the target culture(s) in the CLIL classroom?



The state/majority culture



The regional culture



The minority culture



The individual culture

Future road mapping

<https://forms.gle/XcQbs8xR9biJ7nCbA>





TARTU ÜLIKOOL
Narva kolledž

- anna.golubeva@ut.ee
- nina.raud@ut.ee



narva_college



narvakolledz